

1955 Ford Mainline & Customline Color Schemes

(U.S.)

1955-ford.com

Page 1 of 6

1955 Ford Mainline Tudor Business Sedan Colors

Black & Gray Stripe Craftweave A-code

Light Gray Vinyl seat bolster: basketweave pattern

Dark Gray Bodycloth seat cushion/back: Craftweave dark gray woven rayon-nylon-cotton fabric, broad
Light Gray stripe pattern

Med Gray Cloth headlining

Dark Gray Vinyl door panels: diamond pattern

- Light Gray Metallic instr panel, garnish mldg, seat side shield
- A-code Raven Black steering wheel/column
- Chrome Gray Metallic sun visor bracket
- Dark Gray rear compartment side & back panels: composition board, hard-finish, smooth-surface
- Black rubber pass mat: patterned
- Black rubber compartment mat: heavy, patterned

Ext Single-Tone paint • A-code Raven Black • B-code Banner Blue Poly. • C-code Aquatone Blue

- D-code Waterfall Blue
- E-code Snowshoe White
- F-code Pinetree Green Poly.
- G-code Sea Sprite Green
- H-code Neptune Green (Blue)
- K-code Buckskin Brown
- R-code Torch Red

1955 Ford Mainline Tudor & Fordor Sedan Colors

• *Black & Gray Stripe Craftweave* A-code

Light Gray Vinyl seat bolster: basketweave pattern

Dark Gray Bodycloth seat cushion/back: Craftweave dark gray woven rayon-nylon-cotton fabric, broad
Light Gray stripe pattern

Med Gray Cloth headlining

Dark Gray Vinyl door panels: diamond pattern

- Light Gray Metallic instr panel, garnish mldg, seat side shield
- A-code Raven Black steering wheel/column
- Chrome Gray Metallic sun visor bracket
- Black rubber mat: patterned

Ext Single-Tone paint • A-code Raven Black • B-code Banner Blue Poly. • C-code Aquatone Blue

- D-code Waterfall Blue
- E-code Snowshoe White
- F-code Pinetree Green Poly.
- G-code Sea Sprite Green
- H-code Neptune Green (Blue)
- K-code Buckskin Brown
- R-code Torch Red

continued

- *Blue & White Styletex* AX-code (optional)

White Vinyl seat bolster

Med Blue Woven Plastic seat cushion/back

Med Gray Cloth headlining

- Med Blue Metallic instr panel, garnish mldg
- A-code Raven Black steering wheel/column
- Chrome Gray Metallic sun visor bracket
- E-code Snowshoe White seat side shield
- Black rubber mat: patterned

Ext Single-Tone paint

- B-code Banner Blue Poly.
- C-code Aquatone Blue
- D-code Waterfall Blue

- *Red & White Styletex* AV-code (optional)

White Vinyl seat bolster

Red Woven Plastic seat cushion/back

Med Gray Cloth headlining

- R-code Torch Red instr panel, garnish mldg
- A-code Raven Black steering wheel/column
- Chrome Gray Metallic sun visor bracket
- E-code Snowshoe White seat side shield
- Black rubber mat: patterned

Ext Single-Tone paint

- A-code Raven Black
- E-code Snowshoe White
- F-code Pinetree Green Poly.
- G-code Sea Sprite Green
- H-code Neptune Green (Blue)
- K-code Buckskin Brown
- R-code Torch Red

'55 Customline Tudor Sedan & Fordor Sedan Colors

Page 3 of 6

• *Brown & Gold Craftweave* AU-code

White Vinyl seat bolster: quilted, pleated, gabardine-pattern

Dark Copper (Brown) Bodycloth seat cushion/back: Craftweave brown nylon-rayon fabric w/ interwoven **Gold** yarn thread, check pattern

Headling: _____

- **Med Coppertone Metallic** instr panel, garnish mldg, seat side shield
- A-code **Raven Black** steering wheel/column
- **Chrome Gray Metallic** sun visor bracket
- **Black** rubber mat: patterned

Ext Single-Tone paint

- E-code *Snowshoe White*
- K-code **Buckskin Brown**
- R-code **Torch Red**

Ext Conv Two-Tone paint

- KE-code **Buckskin Brown** & *Snowshoe White*
- RE-code **Torch Red** & *Snowshoe White*

• *Green & Black Craftweave* E-code

Med Turquoise (Green) Vinyl seat bolster: quilted, pleated, gabardine-pattern

Dark Turquoise (Green) Bodycloth seat cushion/back: Craftweave light green nylon-rayon fabric, **Green** & *White* wide-spaced nail-head pattern

Headling: _____

- **Med Green Metallic** instr panel, garnish mldg, seat side shield
- A-code **Raven Black** steering wheel/column
- **Chrome Gray Metallic** sun visor bracket
- **Black** rubber mat: patterned

Ext Single-Tone paint

- F-code **Pinetree Green Poly.**
- G-code **Sea Sprite Green**
- H-code **Neptune Green (Blue)**

Ext Conv Two-Tone paint

- GE-code **Sea Sprite Green** & *Snowshoe White*
- HF-code **Neptune Green (Blue)** & **Pinetree Green Poly.**

continued

• *Blue Diamond Craftweave* C-code

Dark Blue Vinyl seat bolster: quilted, pleated, gabardine-pattern

Med Blue Bodycloth seat cushion/back: Craftweave med blue nylon-rayon fabric, diamond pattern

Headlining: _____

- **Med Blue Metallic** instr panel, garnish mldg
- A-code **Raven Black** steering wheel/column
- **Chrome Gray Metallic** sun visor bracket
- **Dark Blue Metallic** seat side shield
- **Black** rubber mat: patterned

Ext Single-Tone paint

- A-code **Raven Black**
- B-code **Banner Blue Poly.**
- C-code **Aquatone Blue**
- D-code **Waterfall Blue**

Ext Conv Two-Tone paint

- CE-code **Aquatone Blue** & *Snowshoe White*
- DB-code **Waterfall Blue** & **Banner Blue Poly.**

• *Blue & White Styletex* AX-code (optional)

White Vinyl seat bolster

Med Blue Woven Plastic seat cushion/back

Headlining: _____

- **Med Blue Metallic** instr panel, garnish mldg
- A-code **Raven Black** steering wheel/column
- **Chrome Gray Metallic** sun visor bracket
- E-code *Snowshoe White* seat side shield
- **Black** rubber mat: patterned

Ext Single-Tone paint

- B-code **Banner Blue Poly.**
- C-code **Aquatone Blue**
- D-code **Waterfall Blue**

Ext Convl Two-Tone paint

- CE-code **Aquatone Blue** & *Snowshoe White*
- DB-code **Waterfall Blue** & **Banner Blue Poly.**

• *Red & White Styletex* AV-code (optional)

White Vinyl seat bolster

Red Woven Plastic seat cushion/back

Headlining: _____

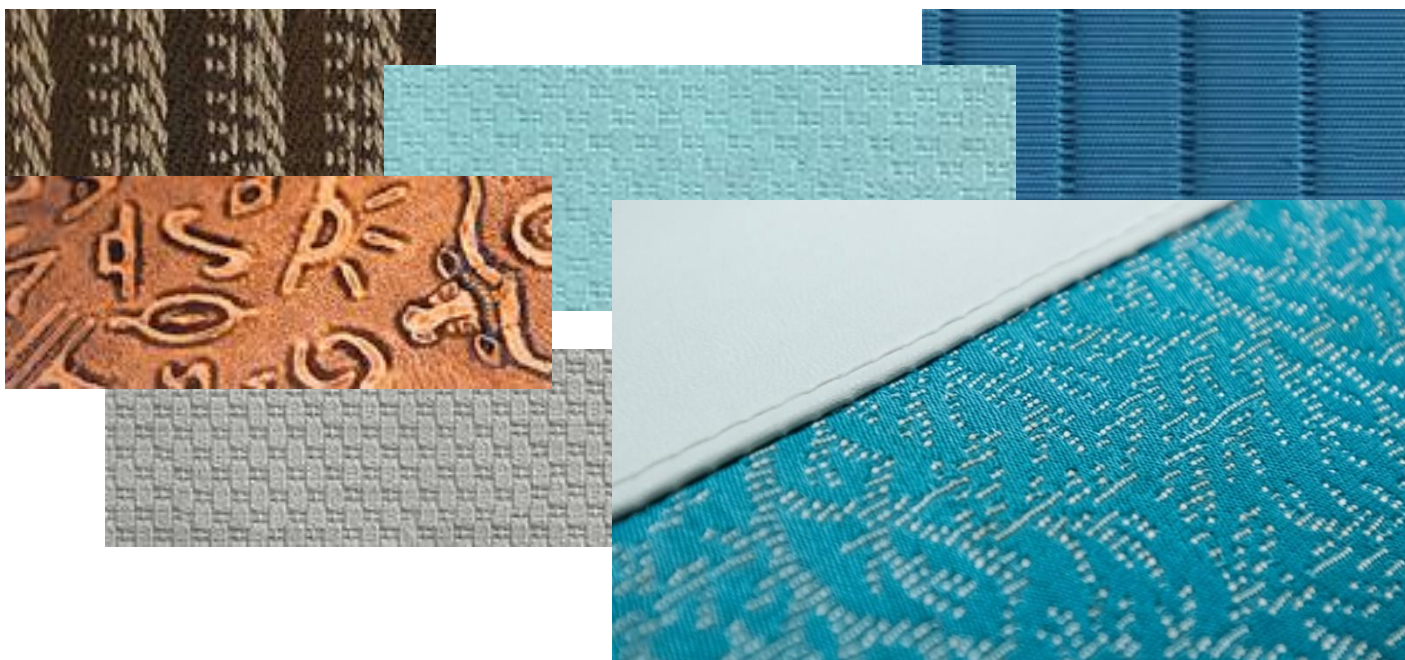
- R-code **Torch Red** instr panel, garnish mldg
- A-code **Raven Black** steering wheel/column
- **Chrome Gray Metallic** sun visor bracket
- E-code *Snowshoe White* seat side shield
- **Black** rubber mat: patterned

Ext Single-Tone paint

- A-code **Raven Black**
- E-code *Snowshoe White*
- F-code **Pinetree Green Poly.**
- G-code **Sea Sprite Green**
- H-code **Neptune Green (Blue)**
- K-code **Buckskin Brown**
- R-code **Torch Red**

Ext Conv Two-Tone paint

- GE-code **Sea Sprite Green** & *Snowshoe White*
- KE-code **Buckskin Brown** & *Snowshoe White*
- RE-code **Torch Red** & *Snowshoe White*
- HF-code **Neptune Green (Blue)** & **Pinetree Green Poly.**



CRAFTWEAVE

is an unusually durable material of combined nylon, rayon, and cotton. It comes in black and gray striped pattern in Mainline models. In Customline models, the Craftweave is of nylon and rayon. The brown and gold is in checks, with a gold-yarn thread interwoven. The green and black is in wide-spaced "nail-head" pattern, and the blue is in diamond pattern.

RANDOM-TWIST

is a distinctive new pattern for Fairlane Club Sedan and Town Sedan. Random-twist is a luxurious, long-wearing nylon-cotton-metallic yarn combination. The three colors available are brown, green, and blue.

FLAKE-PATTERN

in a brown and a black, is fabric of nylon, rayon, and cotton mixture. With both brown and black, the irregular "snowflake" motif is in white. Brown or black Flake-Pattern is available in Fairlane Victoria and in the Crown Victoria.

VINYL

is of two types . . . a firm type for door kick panels and similar areas, and a resilient type for use on seat cushions and backs. Its pattern varies from quilted to smooth, according to model and application.

STYLETEX

interiors are those combining vinyl and a woven plastic, providing a type of interior that's durable and easy to clean.

Disclaimer Information is from original Ford Motor Company (U.S.) brochures, color chip sheets, 1955 Ford Soft Trim Parts Catalog, & secondary sources. Data may not account for production changes, anomalies, or special orders. Colors displayed are approximate. Content is not guaranteed. 1955-ford.com