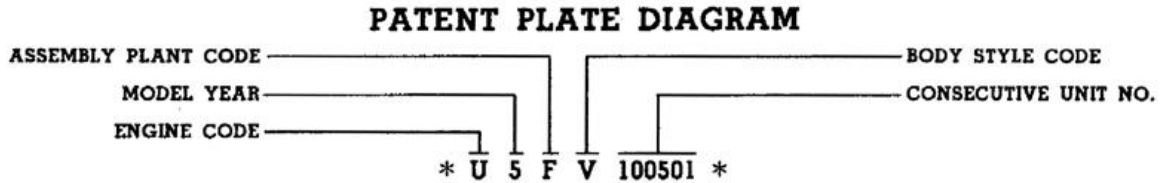


1953-1955 PATENT PLATE

The Patent Plate will be installed on the left front body pillar below the upper hinge opening on all passenger models except the Thunderbird. On the Thunderbird, the Patent Plate will be installed on the dash panel in the engine compartment.

The following diagram of the Patent Plate specifies, in the Serial Number: the Engine Type, Model Year, Plant which assembled the car, Body Style and numerical sequence of assembly.

Indicated in the body specifications are the Body Type, Exterior Paint Color, Trim Scheme and Production Code.



The asterisks before and after the complete serial number are inserted to assure that no other digits or letters can be added to the Serial Number.

Ford Car

Serial Number (*U5FV100501*)

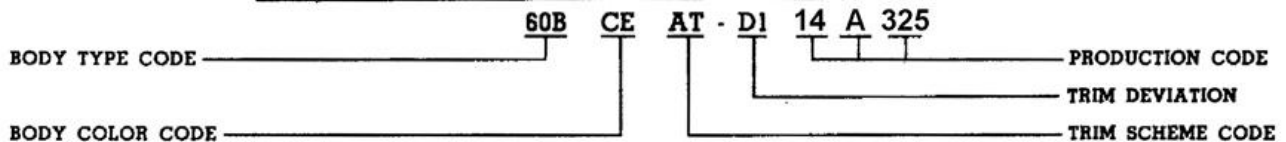
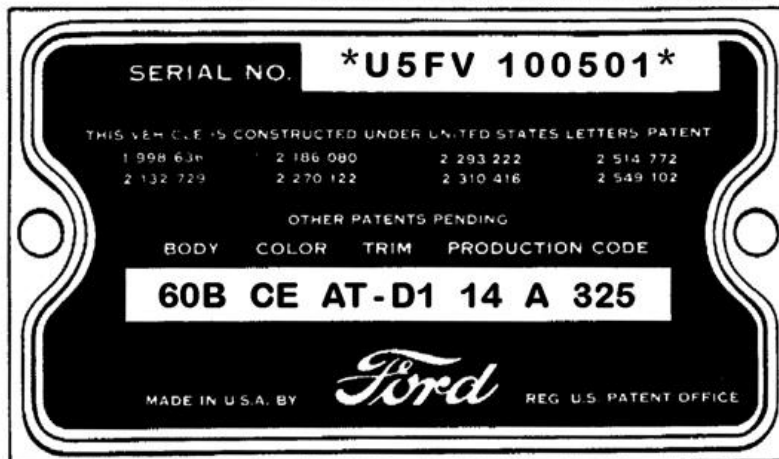
"U" — 8 Cyl. OHV Engine—272 cu. in. displacement

"5" — 1955 Model

"F" — Assembled at Dearborn Plant

"V" — Victoria body style

"100501" — Five hundred and first car assembled



Style and Body Specifications (60B CE AT-D1 14 A 325)

"60B" - Fairlane - Victoria

"CE" - Aquatone Blue lower body, Snowshoe White upper body

"AT" - White Vinyl and Black Bodycloth

"D1" - First Trim Deviation (specified on build sheet)

"14" - Fourteenth Day of Month

"A" - Month of Year - January

"325" - Three Hundred and Twenty Fifth car produced