

1955 Meteor Models & Specifications

Meteor Niagara at [1955-meteor-niagara-models-and-specs.pdf](#) (6 pages)

Meteor Rideau at [1955-meteor-rideau-models-and-specs.pfd](#) (8 pages)



A **meteor** is a **meteoroid**—a piece of rock, dust, or other mater from outer space—that has entered the earth's atmosphere at high speed and is hot, burning, and crumbling from friction with the atmosphere as it falls to earth. It is incandescent and with its glowing wake of shredding material can be seen streaking across the sky. It is colloquially called a "**shooting star**" or a "**falling star.**" A **meteorite** is a particle that has reached the ground.

Meteor automobiles were offered by **Ford Motor Company of Canada**, a wholly owned subsidiary of Ford Motor Company, from:

- 1948-1954, Mercury-Meteor-Lincoln Division, Ford Motor Company of Canada Limited, Walkerville, Ontario
- 1954-1961, Mercury-Meteor-Lincoln Division, Ford Motor Company of Canada Limited, Oakville, Ontario
- 1961-1963, Meteor part of Mercury line
- 1963-1976, Ford Motor Company of Canada Limited, Oakville, Ontario.

The 1955 Meteors, herein, were manufactured at the K-code **Oakville Assembly Plant**, Oakville, Ontario, Canada and sold through **Canadian Mercury-Lincoln-Meteor dealerships** as low-priced products in their lineup. They are built on Ford chassis and bodies, with limited Ford running gear, but have notably different grille and molding.

1955 Meteor, Meteor Niagara, and Meteor Rideau models have a large centered "star-in-V" grille feature. **Niagara** and **Rideau** also have a unique bodyside full-length bright-metal "**meteor-bolt**" design molding. The **Rideau** adds a mid-molding "**flash**" of contrasting paint colour—*Alaska White*, **Black**, **Torch Red**, or **Gold** [est]—on Single-Tone, Two-Tone, or Tri-Tone paint schemes. Striking!

ALL MODELS

- **Meteor Business Coupe** 2 dr, 3 pass
- **Meteor Two-Door Sedan**
- **Meteor Four-Door Sedan**
- **Meteor Ranch Wagon** 2 dr, 6 pass
- **Meteor Niagara Two-Door Sedan**
- **Meteor Niagara Four-Door Sedan**
- **Meteor Niagara Ranch Wagon** 2 dr, 6 pass, stn wagon
- **Meteor Niagara County Sedan** 4 dr, 8 pass, stn wagon
- **Meteor Rideau Club Sedan** 2 dr
- **Meteor Rideau Town Sedan** 4 dr
- **Meteor Rideau Victoria** 2 dr, pillarless hardtop
- **Meteor Rideau Crown Victoria** 2 dr, (steel top)
- **Meteor Rideau Sunliner** 2 dr, convertible
- **Meteor Rideau Country Sedan** 4 dr, 8 pass, stn wagon

Serial Number Location

1949-1954, stamped on identification plate on cowl and on frame right side under hood

1955-1967, stamped on identification plate attached to left front door pillar post

1968-1973, stamped on plate attached to left front corner of dashboard, viewed through windshield

Engine Number Location

1949-1954, stamped on identification plate on cowl

1955-1967, stamped on identification plate attached to left front door pillar post

Web page 1955-ford.com/1955-meteor-niagara-rideau.html

1 Engine – 3 Hp Ratings

Hp ratings are SAE pre-1972 "gross"

Meteor V-8 - 272-cid 90°, 2-ohv, 3.625" bore x 3.30" stroke, valve clearance (hot) int .019 exh .019,"

5 main bearings, 6-volt, 3-blade fan

- **Std 162-hp** @ 4400 rpm, 258 lb-ft torque @ 2200 rpm, 7.6:1 comp ratio, 130 psi, 2-bbl carb, single-exh (opt dual), Meteor, **all drives**
- **Std 175-hp** @ 4400 rpm, 264 lb-ft torque @ 2600 rpm, 7.6:1 comp ratio, ____ psi, 4-bbl carb, single-exh (opt dual), Niagara, or dual-exh, Rideau, **all drives**
- **Opt 182-hp** @ 4400 rpm, 268 lb-ft torque @ 2600 rpm, 8.5:1 comp ratio, 140 psi, 4-bbl carb, dual-exh, Rideau & Wagons, **Merc-O-Matic Dr** (required)

3 Transmissions

- **Std Silent-Ease Standard** (manual 3-spd)
1st, 2nd (synchro), 3rd (synchro), & Reverse
- **Opt Touch-O-Matic Overdrive** (manual 3-spd + auto planetary 4th-spd Overdrive gear)
1st, 2nd (synchro), 3rd (synchro), auto 4th OD (30% lower eng rpm than 3rd), & Reverse
Gear selector on steering column "H" pattern, Overdrive push/pull T-handle below control panel
Lock-in (engage OD) push *in* T-handle when car is stopped or at any speed & let-up throttle pedal when above 27-28 mph, (auto disengage & downshift to 3rd below 21-22 mph)
Kick-down (to 3rd, for hill climbing or passing) floor throttle pedal, (let-up pedal to auto return to OD)
Lock-out (disengage OD) pull *out* T-handle when car is stopped or in "kick down" (3rd) operation
- **Opt Speed-Trigger Merc-O-Matic Drive** (automatic 3-spd)
Low (1st), Intermediate (2nd, Passing Gear), High (3rd), & Reverse
5-Position Safety-Sequence Selector w/ illuminated indicator dial on steering column
P (Park)
R (Reverse)
N (Neutral) • **start engine** car can be towed up to 12 miles at -40 mph, otherwise w/ rear wheels raised
DR (Drive) • **start-out in 2nd** & auto upshift to 3rd (typical driving)
 - **start-out at full-throttle in 1st** (Speed-Trigger) & auto upshifts to 2nd (30 mph) & 3rd (65 mph)
 - **full-throttle kick-down to Passing Gear (2nd)** (below 65-68 mph & above 17-23 mph)
 - **full-throttle kick-down to 1st** (below 17-23 mph)
- LO** (Low) • **start-out in 1st & hold** (up to 35 mph), *auto upshifts to 2nd & 3rd if/when DR selected*
 - **downshift to 2nd & hold** (below 60 mph & above 17-23 mph - engine braking)
 - **downshift to 1st & hold** (below 17-23 mph - engine braking)

Clutch

- Semi-centrifugal, dry, single plate
- **10"** (V-8 272 eng)
- Pedal free travel 7/8 to 1-1/8"

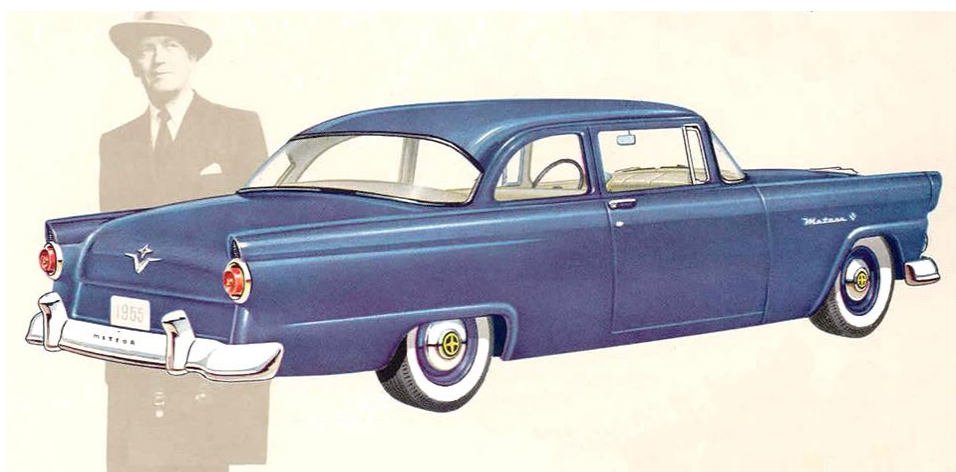
Rims

- Pressed steel, welded
- 15" dia x 5" wide
- 5 lug x 4.5" (114.3 mm) bolt pattern

Tires

- Bias 4-ply
- 6.70 x 15" or 7.10 x 15"
- Tubeless, black sidewall

Meteor Business Coupe



1955 Meteor Business Coupe

2 dr, 3 pass

No back seat—**rear compartment** (briefcases, sample cases, etc.) 60.4" wide x 31.9" long, level floor

Black rubber windshield & rear window molding, no bodyside molding

Single-Tone or Two-Tone ext paint

Production Total **114**

Model 270D

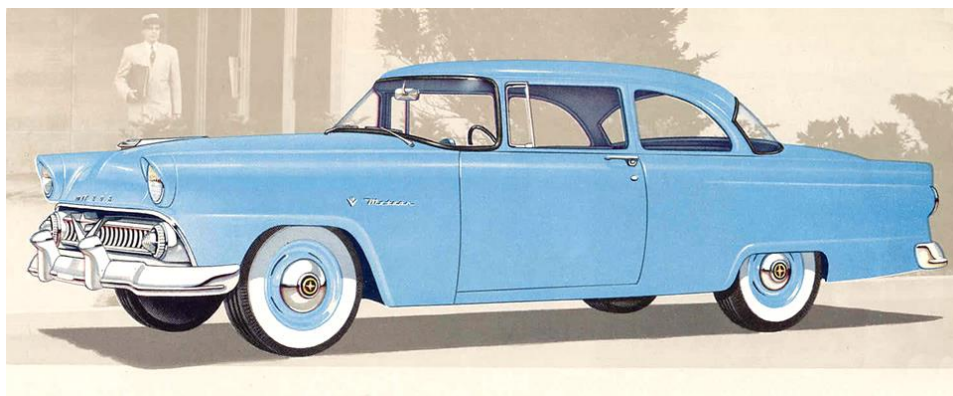
\$2,064 CAD FOB Oakville (std trans) Shipping weight 3,136 lb

Meteor V-8 - 272-cid 90°, 2-ohv, 3.625" bore x 3.30" stroke, 5 main bearings, 6-volt, 3-blade fan

Std 162-hp @ 4400 rpm, 258 lb-ft torque @ 2200 rpm, 7.6:1 comp ratio 130 psi, 2-bbl, single-exh (opt dual), w/

- **Standard**, 10" clutch, 3.73 (opt 3.90) axle, 6.70 x 15" tires
- Opt **Overdrive**, 10" clutch, 3.90 (opt 3.73) axle, 6.70 x 15" tires
- Opt **Merc-O-Matic Dr**, 3.31 (opt 3.54) axle, 6.70 x 15" tires

Meteor Two-Door Sedan



1955 Meteor Two-Door Sedan

6 pass

Black rubber windshield & rear window molding, no bodyside molding

Single-Tone or Two-Tone ext paint

Production Total **2,023**

Model 270A

\$2,172 CAD FOB Oakville (std trans) Shipping weight 3,174 lb

Meteor V-8 - 272-cid 90°, 2-ohv, 3.625" bore x 3.30" stroke, 5 main bearings, 6-volt, 3-blade fan

Std 162-hp @ 4400 rpm, 258 lb-ft torque @ 2200 rpm, 7.6:1 comp ratio 130 psi, 2-bbl, single-exh (opt dual), w/

- **Standard**, 10" clutch, 3.73 (opt 3.90) axle, 6.70 x 15" tires
- Opt **Overdrive**, 10" clutch, 3.90 (opt 3.73) axle, 6.70 x 15" tires
- Opt **Merc-O-Matic Dr**, 3.31 (opt 3.54) axle, 6.70 x 15" tires

Meteor Four-Door Sedan



1955 Meteor Four-Door Sedan

6 pass

Black rubber windshield & rear window molding, no bodyside molding

Single-Tone or Two-Tone ext paint

Production Total **2,146**

Model 273A

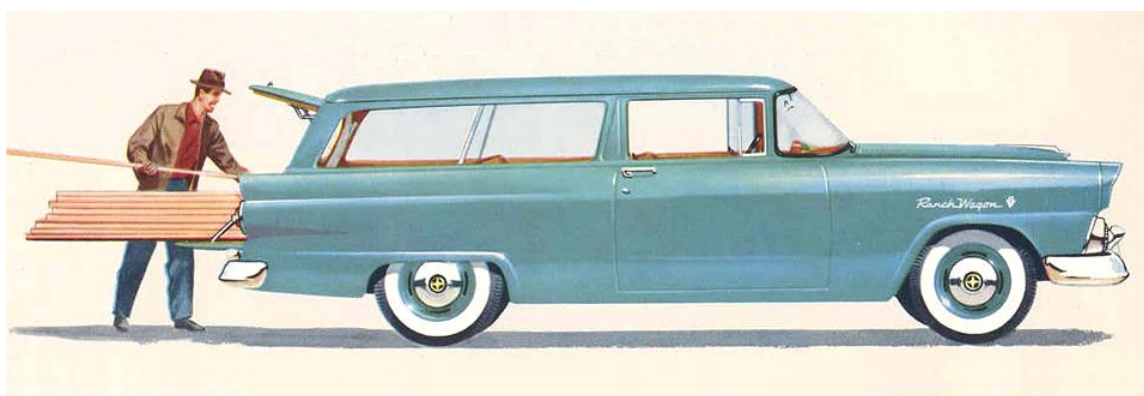
\$2,228 CAD FOB Oakville (std trans) Shipping weight 3,216 lb

Meteor V-8 - 272-cid 90°, 2-ohv, 3.625" bore x 3.30" stroke, 5 main bearings, 6-volt, 3-blade fan

Std 162-hp @ 4400 rpm, 258 lb-ft torque @ 2200 rpm, 7.6:1 comp ratio 130 psi, 2-bbl, single-exh (opt dual), w/

- **Standard**, 10" clutch, 3.73 (opt 3.90) axle, 6.70 x 15" tires
- Opt **Overdrive**, 10" clutch, 3.90 (opt 3.73) axle, 6.70 x 15" tires
- Opt **Merc-O-Matic Dr**, 3.31 (opt 3.54) axle, 6.70 x 15" tires

Meteor Ranch Wagon



1955 Meteor Ranch Wagon

2 dr, 6 pass, station wagon

Stowaway back seat bottom tilts up & forward, back folds forward & down as level-floor loadspace, length 74"

Black rubber windshield & rear window molding, no bodyside molding

Single-Tone pr Two-Tone ext paint

Production Total **461**

Model 259A

\$2,611 CAD FOB Oakville (std trans) Shipping weight 3,443 lb

Meteor V-8 - 272-cid 90°, 2-ohv, 3.625" bore x 3.30" stroke, 5 main bearings, 6-volt, 3-blade fan

Std 162-hp @ 4400 rpm, 258 lb-ft torque @ 2200 rpm, 7.6:1 comp ratio 130 psi, 2-bbl, single-exh (opt dual), w/

- **Standard**, 10" clutch, 4.09 (opt 4.27) axle, 7.10 x 15" tires
- Opt **Overdrive**, 10" clutch, 4.27 (opt none) axle, 7.10 x 15" tires
- Opt **Merc-O-Matic Dr**, 3.54 (opt none) axle, 7.10 x 15" tires, or

Opt 182-hp @ 4400 rpm, 268 lb-ft torque @ 2600 rpm, 8.5:1 comp ratio, 140 psi, 4-bbl, dual-exh, w/

Merc-O-Matic Dr (reqd), 3.54 (opt none) axle, 7.10 x 15" tires

1955 METEOR CAPACITIES

Engine Oil 4 imp qt or 5 w/ filter

Oil Bath Air Cleaner fill to level mark (approx. 1 imp pt)

Cooling System 16.5 imp qt or 17.5 w/ heater, pressure 13 lb

Standard Trans 2.5 imp pt, **Overdrive** 3.5 imp pt, **Merc-O-Matic Dr** 8 imp qt

Differential 2.5 imp pt

Fuel Tank 14.5 imp gal (cars), 15.5 (wagons)

1955 METEOR IGNITION SYSTEM

6-Volt Positive Ground

V-8 Firing Order 1-5-4-8-6-3-7-2

Spark Control full vacuum

Breaker Point Gap .014 to .016"

Spark Plugs size 18 mm, gap .032 to .036"

Timing BTDC 3° (Standard & OD), 6° (Merc-O-Matic Dr), max 8-10°

Also see these (printable) PDFs at website 1955-ford.com

(or search & find with Google)

- [1955-ford-mainline-and-customline-models-and-specs.pdf](#) (9 pages)
- [1955-ford-mainline-and-customline-color-schemes.pdf](#) (6 pages)
- [1955-ford-fairlane-and-crown-vic-models-and-specs.pdf](#) (7 pages)
- [1955-ford-fairlane-and-crown-vic-color-schemes.pdf](#) (8 pages)
- [1955-ford-station-wagon-and-courier-models-and-specs.pdf](#) (8 pages)
- [1955-ford-station-wagon-and-courier-color-schemes.pdf](#) (8 pages)
- [1955-ford-all-colors-list.pdf](#) (5 pages)
- [1955-meteor-models-and-specs.pdf](#) (inclcd engs & trans) (7 pages)
- [1955-meteor-niagara-models-and-specs.pdf](#) (6 pages)
- [1955-meteor-rideau-models-and-specs.pdf](#) (8 pages)
- [1955-meteor-ext-paint-colours-all.pdf](#) (5 pages)