

1955 Meteor Niagara Models & Specifications

Meteor at 1955-meteor-models-and-specs.pdf (incld engs & trans) (7 pages)

Meteor Rideau at 1955-meteor-rideau-models-and-specs.pdf (8 pages)



A **meteor** is a **meteoroid**—a piece of rock, dust, or other mater from outer space—that has entered the earth's atmosphere at high speed and is hot, burning, and crumbling from friction with the atmosphere as it falls to earth. It is incandescent and with its glowing wake of shredding material can be seen streaking across the sky. It is colloquially called a "**shooting star**" or a "**falling star**." A **meteorite** is a particle that has reached the ground.

Meteor automobiles were offered by **Ford Motor Company of Canada**, a wholly owned subsidiary of Ford Motor Company, from:

- 1948-1954, Mercury-Meteor-Lincoln Division, Ford Motor Company of Canada Limited, Walkerville, Ontario
- 1954-1961, Mercury-Meteor-Lincoln Division, Ford Motor Company of Canada Limited, Oakville, Ontario
- 1961-1963, Meteor part of Mercury line
- 1963-1976, Ford Motor Company of Canada Limited, Oakville, Ontario.

The 1955 Meteors, herein, were manufactured at the K-code **Oakville Assembly Plant**, Oakville, Ontario, Canada and sold through **Canadian Mercury-Lincoln-Meteor dealerships** as low-priced products in their lineup. They are built on Ford chassis and bodies, with limited Ford running gear, but have notably different grille and molding.

1955 Meteor, **Meteor Niagara**, and **Meteor Rideau** models have a large centered "star-in-V" grille feature. **Niagara** and **Rideau** also have a unique bodyside full-length bright-metal "**meteor-bolt**" design molding. The **Rideau** adds a mid-molding "**flash**" of contrasting paint colour—*Alaska White*, **Black**, **Torch Red**, or **Gold** [est]—on Single-Tone, Two-Tone, or Tri-Tone paint schemes. Striking!

ALL MODELS

- **Meteor Business Coupe** 2 dr, 3-pass
- **Meteor Two-Door Sedan**
- **Meteor Four-Door Sedan**
- **Meteor Ranch Wagon** 2 dr, 6-pass
- **Meteor Niagara Two-Door Sedan**
- **Meteor Niagara Four-Door Sedan**
- **Meteor Niagara Ranch Wagon** 2 dr, 6 pass, stn wagon
- **Meteor Niagara County Sedan** 4 dr, 8 pass, stn wagon
- **Meteor Rideau Club Sedan** 2 dr
- **Meteor Rideau Town Sedan** 4 dr
- **Meteor Rideau Victoria** 2 dr, pillarless hardtop
- **Meteor Rideau Crown Victoria** 2 dr, (steel top)
- **Meteor Rideau Sunliner** 2 dr, convertible
- **Meteor Rideau Country Sedan** 4 dr, 8 pass, stn wagon

Serial Number Location

1949-1954, stamped on identification plate on cowl and on frame right side under hood

1955-1967, stamped on identification plate attached to left front door pillar post

1968-1973, stamped on plate attached to left front corner of dashboard, viewed through windshield

Engine Number Location

1949-1954, stamped on identification plate on cowl

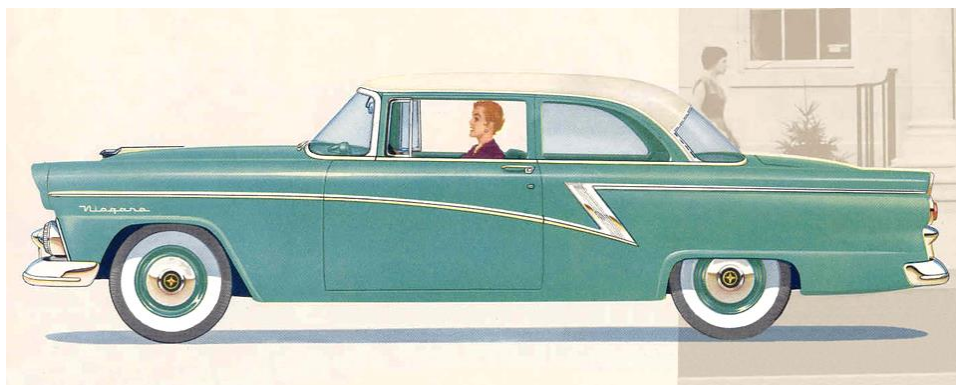
1955-1967, stamped on identification plate attached to left front door pillar post

Web page 1955-ford.com/1955-meteor-niagara-rideau.html



Meteor Niagara automobiles are named for **Niagara Falls**, the waterfalls and waterways at the southern end of Niagara Gorge, spanning the border between Niagara Falls, Ontario, Canada and Niagara Falls, New York, United States. Unfortunately, after much research of historical documents, the meaning of the word **Niagara** itself is not definitive.

Meteor Niagara Two-Door Sedan



1955 Meteor Niagara Two-Door Sedan

6 pass

Bright-metal windshield, rear window, drip, beltline, & bodyside full-length **meteor-bolt** molding

Single-Tone, Two-Tone, or Tri-Tone ext paint

Production Total **3,942**

Model 270B

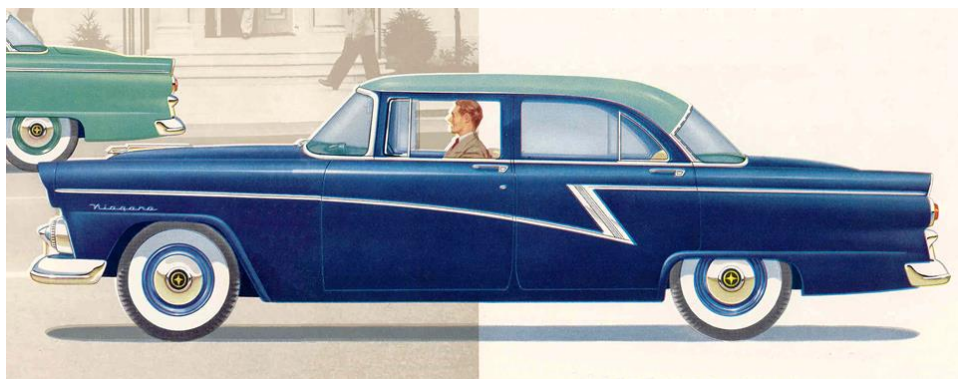
\$2,306 CAD FOB Oakville (std trans) Shipping weight 3,196 lb

Meteor V-8 - 272-cid 90°, 2-ohv, 3.625" bore x 3.30" stroke, 5 main bearings, 6-volt, 3-blade fan

Std 175-hp @ 4400 rpm, 264 lb-ft torque @ 2600 rpm, 7.6:1 comp ratio, ___ psi, 4-bbl, single-exh (opt dual), w/

- **Standard**, 10" clutch, 3.73 (opt 3.90) axle, 6.70 x 15" tires
- Opt **Overdrive**, 10" clutch, 3.90 (opt 3.73) axle, 6.70 x 15" tires
- Opt **Merc-O-Matic Dr**, 3.31 (opt 3.54) axle, 6.70 x 15" tires

Meteor Niagara Four-Door Sedan



1955 Meteor Niagara Four-Door Sedan

6 pass

Bright-metal windshield, rear window, drip, beltline, & bodyside full-length **meteor-bolt** molding

Single-Tone, Two-Tone, or Tri-Tone ext paint

Production Total **9,984**

Model 273B

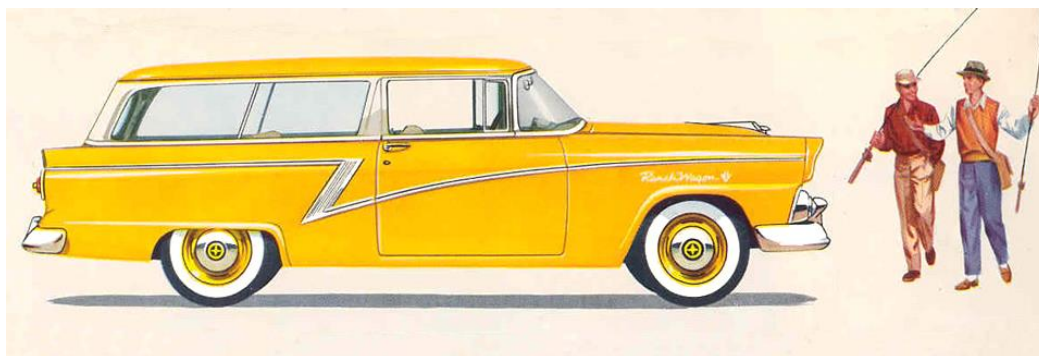
\$2,363 CAD FOB Oakville (std trans) Shipping weight 3,236 lb

Meteor V-8 - 272-cid 90°, 2-ohv, 3.625" bore x 3.30" stroke, 5 main bearings, 6-volt, 3-blade fan

Std 175-hp @ 4400 rpm, 264 lb-ft torque @ 2600 rpm, 7.6:1 comp ratio, ___ psi, 4-bbl, single-exh (opt dual), w/

- **Standard**, 10" clutch, 3.73 (opt 3.90) axle, 6.70 x 15" tires
- Opt **Overdrive**, 10" clutch, 3.90 (opt 3.73) axle, 6.70 x 15" tires
- Opt **Merc-O-Matic Dr**, 3.31 (opt 3.54) axle, 6.70 x 15" tires

Meteor Niagara Ranch Wagon



1955 Meteor Niagara Ranch Wagon

2 dr, 6 pass, station wagon

Stowaway back seat bottom tilts up & forward, back folds forward & down as level-floor loadspace, length 74"

Bright-metal windshield, rear window, beltline, & bodyside full-length **meteor-bolt** molding

Single-Tone, Two-Tone, or Tri-Tone ext paint

Production Total **431**

Model 259B

\$2,715 CAD FOB Oakville (std eng & trans) Shipping weight 3,461 lb

Meteor V-8 - 272-cid 90°, 2-ohv, 3.625" bore x 3.30" stroke, 5 main bearings, 6-volt, 3-blade fan

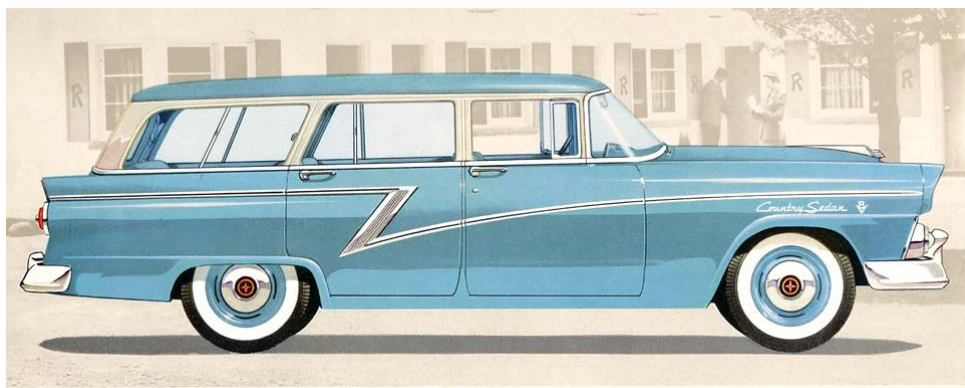
Std 175-hp @ 4400 rpm, 264 lb-ft torque @ 2600 rpm, 7.6:1 comp ratio, ___ psi, 4-bbl, single-exh (opt dual), w/

- **Standard**, 10" clutch, 4.09 (opt 4.27) axle, 7.10 x 15" tires
- Opt **Overdrive**, 10" clutch, 4.27 (opt none) axle, 7.10 x 15" tires
- Opt **Merc-O-Matic Dr**, 3.54 (opt none) axle, 7.10 x 15" tires, or

Opt 182-hp @ 4400 rpm, 268 lb-ft torque @ 2600 rpm, 8.5:1 comp ratio, 140 psi, 4-bbl, dual-exh, w/

Merc-O-Matic Dr (reqd), 3.54 (opt none) axle, 7.10 x 15" tires

Meteor Niagara Country Sedan



1955 Meteor Niagara Country Sedan

4 dr, 8 pass, station wagon

Stowaway back seat divided 2/3 left & 1/3 right. Divided bottoms fold up, forward, & down as level-floor loadspace, & divided backs fold forward & down as level-floor loadspace. As well, with the back folded forward, the whole Stowaway back 1/3 right seat tilts up & forward for rear seat access. **Rear Seat** (2-pass) w/ back & bottom cushions removed the back folds forward & down as level-floor loadspace, total length 82.9."

Bright-metal windshield, rear window, beltline, & bodyside full-length **meteor-bolt** molding

Single-Tone, Two-Tone, or Tri-Tone ext paint

Production Total **349**

Model 279B

\$2,935 CAD FOB Oakville (std eng & trans) Shipping weight 3,603 lb

Meteor V-8 - 272-cid 90°, 2-ohv, 3.625" bore x 3.30" stroke, 5 main bearings, 6-volt, 3-blade fan

Std 175-hp @ 4400 rpm, 264 lb-ft torque @ 2600 rpm, 7.6:1 comp ratio, ___ psi, 4-bbl, single-exh (opt dual), w/

- **Standard**, 10" clutch, 4.09 (opt 4.27) axle, 7.10 x 15" tires
- Opt **Overdrive**, 10" clutch, 4.27 (opt none) axle, 7.10 x 15" tires
- Opt **Merc-O-Matic Dr**, 3.54 (opt none) axle, 7.10 x 15" tires, or

Opt 182-hp @ 4400 rpm, 268 lb-ft torque @ 2600 rpm, 8.5:1 comp ratio, 140 psi, 4-bbl, dual-exh, w/

Merc-O-Matic Dr (reqd), 3.54 (opt none) axle, 7.10 x 15" tires

Also see these (printable) PDFs at website 1955-ford.com

(or search & find with Google)

- [1955-ford-mainline-and-customline-models-and-specs.pdf](#) (9 pages)
- [1955-ford-mainline-and-customline-color-schemes.pdf](#) (6 pages)
- [1955-ford-fairlane-and-crown-vic-models-and-specs.pdf](#) (7 pages)
- [1955-ford-fairlane-and-crown-vic-color-schemes.pdf](#) (8 pages)
- [1955-ford-station-wagon-and-courier-models-and-specs.pdf](#) (8 pages)
- [1955-ford-station-wagon-and-courier-color-schemes.pdf](#) (8 pages)
- [1955-ford-all-colors-list.pdf](#) (5 pages)
- [1955-meteor-models-and-specs.pdf](#) (incld engs & trans) (7 pages)
- [1955-meteor-niagara-models-and-specs.pdf](#) (6 pages)
- [1955-meteor-rideau-models-and-specs.pdf](#) (8 pages)
- [1955-meteor-ext-paint-colours-all.pdf](#) (5 pages)