

1955 Meteor Rideau Models & Specifications

Meteor at 1955-meteor-models-and-specs.pdf (incl'd engs & trans) (7 pages)

Meteor Niagara at 1955-meteor-niagara-models-and-specs.pfd (6 pages)



A **meteor** is a **meteoroid**—a piece of rock, dust, or other mater from outer space—that has entered the earth's atmosphere at high speed and is hot, burning, and crumbling from friction with the atmosphere as it falls to earth. It is incandescent and with its glowing wake of shredding material can be seen streaking across the sky. It is colloquially called a "**shooting star**" or a "**falling star**." A **meteorite** is a particle that has reached the ground.

Meteor automobiles were offered by **Ford Motor Company of Canada**, a wholly owned subsidiary of Ford Motor Company, from:

- 1948-1954, Mercury-Meteor-Lincoln Division, Ford Motor Company of Canada Limited, Walkerville, Ontario
- 1954-1961, Mercury-Meteor-Lincoln Division, Ford Motor Company of Canada Limited, Oakville, Ontario
- 1961-1963, Meteor part of Mercury line
- 1963-1976, Ford Motor Company of Canada Limited, Oakville, Ontario.

The 1955 Meteors, herein, were manufactured at the K-code **Oakville Assembly Plant**, Oakville, Ontario, Canada and sold through **Canadian Mercury-Lincoln-Meteor dealerships** as low-priced products in their lineup. They are built on Ford chassis and bodies, with limited Ford running gear, but have notably different grille and molding.

1955 Meteor, **Meteor Niagara**, and **Meteor Rideau** models have a large centered "star-in-V" grille feature. **Niagara** and **Rideau** also have a unique bodyside full-length bright-metal "**meteor-bolt**" design molding. The **Rideau** adds a mid-molding "**flash**" of contrasting paint colour—*Alaska White*, **Black**, **Torch Red**, or **Gold** [est]—on Single-Tone, Two-Tone, or Tri-Tone paint schemes. Striking!

ALL MODELS

- **Meteor Business Coupe** 2 dr, 3 pass
- **Meteor Two-Door Sedan**
- **Meteor Four-Door Sedan**
- **Meteor Ranch Wagon** 2 dr, 6 pass
- **Meteor Niagara Two-Door Sedan**
- **Meteor Niagara Four-Door Sedan**
- **Meteor Niagara Ranch Wagon** 2 dr, 6 pass, stn wagon
- **Meteor Niagara County Sedan** 4 dr, 8 pass, stn wagon
- **Meteor Rideau Club Sedan** 2 dr
- **Meteor Rideau Town Sedan** 4 dr
- **Meteor Rideau Victoria** 2 dr, pillarless hardtop
- **Meteor Rideau Crown Victoria** 2 dr, (steel top)
- **Meteor Rideau Sunliner** 2 dr, convertible
- **Meteor Rideau Country Sedan** 4 dr, 8 pass, stn wagon

Serial Number Location

1949-1954, stamped on identification plate on cowl and on frame right side under hood

1955-1967, stamped on identification plate attached to left front door pillar post

1968-1973, stamped on plate attached to left front corner of dashboard, viewed through windshield

Engine Number Location

1949-1954, stamped on identification plate on cowl

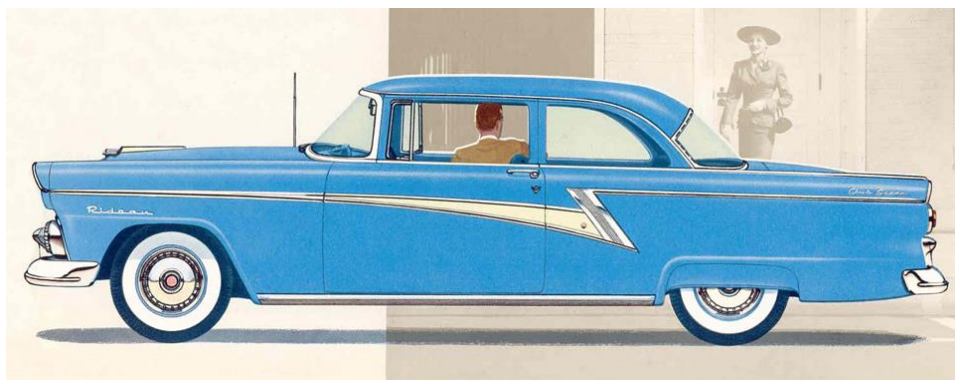
1955-1967, stamped on identification plate attached to left front door pillar post

Web page 1955-ford.com/1955-meteor-niagara-rideau.html



Meteor Rideau automobiles are named for the historically significant **Rideau River**, that flows north from Upper Rideau Lake to the Ottawa River at **Rideau Falls** in Ottawa, Ontario--146 kilometers (91 miles). **Samuel de Champlain** (1567-1635) a French explorer and founder of Quebec and New France (1608) wrote that Rideau Falls was given the name "Rideau," with English translation "curtain," because of the curtain-like appearance of the falling water. Rideau River was later named after the waterfall.

Meteor Rideau Club Sedan



1955 Meteor Rideau Club Sedan

2 dr, 6 pass

Bodyside full-length bright-metal **meteor-bolt** molding w/ mid **flash** contrasting paint colour

Single-Tone, Two-Tone, or Tri-Tone, *plus* flash colour ext paint

Production Total **664**

Model 270C

\$2,461 CAD FOB Oakville (std eng & trans) Shipping weight 3,222 lb

Meteor V-8 - 272-cid 90°, 2-ohv, 3.625" bore x 3.30" stroke, 5 main bearings, 6-volt, 3-blade fan

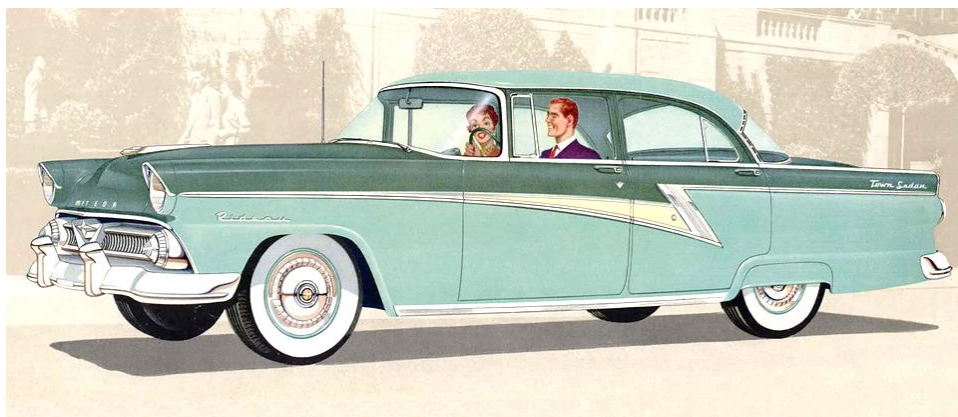
Std 175-hp @ 4400 rpm, 264 lb-ft torque @ 2600 rpm, 7.6:1 comp ratio, ___ psi, 4-bbl, dual-exh, w/

- **Standard**, 10" clutch, 3.73 (opt 3.90) axle, 6.70 x 15" tires
- **Opt Overdrive**, 10" clutch, 3.90 (opt 3.73) axle, 6.70 x 15" tires
- **Opt Merc-O-Matic Dr**, 3.31 (opt 3.54) axle, 6.70 x 15" tires, or

Opt 182-hp @ 4400 rpm, 268 lb-ft torque @ 2600 rpm, 8.5:1 comp ratio, 140 psi, 4-bbl, dual-exh, w/

Merc-O-Matic Dr (reqd), 3.31 (opt 3.54) axle, 6.70 x 15" tires

Meteor Rideau Town Sedan



1955 Meteor Rideau Town Sedan

4 dr, 6 pass

Bodyside full-length bright-metal **meteor-bolt** molding w/ mid **flash** contrasting paint colour

Single-Tone, Two-Tone, or Tri-Tone, *plus* flash colour ext paint

Production Total **2,367**

Model 273C

\$2,517 CAD FOB Oakville (std eng & trans) Shipping weight 3,268 lb

Meteor V-8 - 272-cid 90°, 2-ohv, 3.625" bore x 3.30" stroke, 5 main bearings, 6-volt, 3-blade fan

Std 175-hp @ 4400 rpm, 264 lb-ft torque @ 2600 rpm, 7.6:1 comp ratio, ___ psi, 4-bbl, dual-exh, w/

- **Standard**, 10" clutch, 3.73 (opt 3.90) axle, 6.70 x 15" tires
- Opt **Overdrive**, 10" clutch, 3.90 (opt 3.73) axle, 6.70 x 15" tires
- Opt **Merc-O-Matic Dr**, 3.31 (opt 3.54) axle, 6.70 x 15" tires, or

Opt 182-hp @ 4400 rpm, 268 lb-ft torque @ 2600 rpm, 8.5:1 comp ratio, 140 psi, 4-bbl, dual-exh, w/

Merc-O-Matic Dr (reqd), 3.31 (opt 3.54) axle, 6.70 x 15" tires

Meteor Rideau Victoria



1955 Meteor Rideau Victoria

2 dr, 6 pass, pillarless hardtop

Bodyside full-length bright-metal **meteor-bolt** molding w/ mid **flash** contrasting paint colour

Single-Tone, Two-Tone, or Tri-Tone, *plus* flash colour ext paint

Production Total **373**

Model 264C

\$2,680 CAD FOB Oakville (std eng & trans) Shipping weight 3,318 lb

Meteor V-8 - 272-cid 90°, 2-ohv, 3.625" bore x 3.30" stroke, 5 main bearings, 6-volt, 3-blade fan

Std 175-hp @ 4400 rpm, 264 lb-ft torque @ 2600 rpm, 7.6:1 comp ratio, ___ psi, 4-bbl, dual-exh, w/

- **Standard**, 10" clutch, 3.73 (opt 3.90) axle, 6.70 x 15" tires
- Opt **Overdrive**, 10" clutch, 3.90 (opt 3.73) axle, 6.70 x 15" tires
- Opt **Merc-O-Matic Dr**, 3.31 (opt 3.54) axle, 7.10 x 15" tires, or

Opt 182-hp @ 4400 rpm, 268 lb-ft torque @ 2600 rpm, 8.5:1 comp ratio, 140 psi, 4-bbl, dual-exh, w/

Merc-O-Matic Dr (reqd), 3.31 (opt 3.54) axle, 7.10 x 15" tires

Victoria and **Crown Victoria** automobile names reflect the **Victorian era** (approx. 1820-1914

and Queen Victoria's reign 1837-1901) and the **horse-drawn carriages** that feature a

front open raised two-coachman seat, and a rear low-slung forward-facing two-passenger sofa seat protected by a prominent (hooded and folding) **calash top**.

They were hired by **fashionable English ladies** for city, park, and countryside outings guided by **one or two uniformed coachmen**. This example is from the

Hammann Twistringgen Workshop, Germany (1890-1895).



Meteor Rideau Crown Victoria



1955 Meteor Rideau Crown Victoria

2 dr, 6 pass

"Crown of chrome" molding over steel top

Bodyside full-length bright-metal **meteor-bolt** molding w/ mid **flash** contrasting paint colour

Single-Tone, Two-Tone, or Tri-Tone, *plus* flash colour ext paint

Production Total **141**

Model 264A

\$2,810 CAD FOB Oakville (std eng & trans) Shipping weight 3,380 lb

Meteor V-8 - 272-cid 90°, 2-ohv, 3.625" bore x 3.30" stroke, 5 main bearings, 6-volt, 3-blade fan

Std 175-hp @ 4400 rpm, 264 lb-ft torque @ 2600 rpm, 7.6:1 comp ratio, ___ psi, 4-bbl, dual-exh, w/

- **Standard**, 10" clutch, 3.73 (opt 3.90) axle, 6.70 x 15" tires
- Opt **Overdrive**, 10" clutch, 3.90 (opt 3.73) axle, 6.70 x 15" tires
- Opt **Merc-O-Matic Dr**, 3.31 (opt 3.54) axle, 7.10 x 15" tires, or

Opt 182-hp @ 4400 rpm, 268 lb-ft torque @ 2600 rpm, 8.5:1 comp ratio, 140 psi, 4-bbl, dual-exh, w/

Merc-O-Matic Dr (reqd), 3.31 (opt 3.54) axle, 7.10 x 15" tires

Meteor Rideau Sunliner



1955 Meteor Rideau Sunliner

2 dr, 6 pass, convertible

Electro-hydraulic unit (a motor & oil pump) **powered** convertible top

Bodyside full-length bright-metal **meteor-bolt** molding w/ mid **flash** contrasting paint colour

Single-Tone, Two-Tone, or Tri-Tone, *plus* flash colour ext paint

Production Total **201**

Model 2-76B

\$2,878 CAD FOB Oakville (std eng & trans) Shipping weight 3.382 lb

Meteor V-8 - 272-cid 90°, 2-ohv, 3.625" bore x 3.30" stroke, 5 main bearings, 6-volt, 3-blade fan

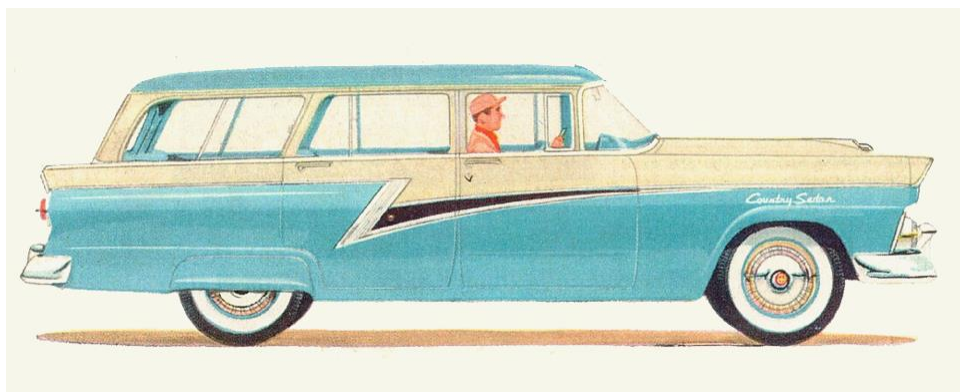
Std 175-hp @ 4400 rpm, 264 lb-ft torque @ 2600 rpm, 7.6:1 comp ratio, ___ psi, 4-bbl, dual-exh, w/

- **Standard**, 10" clutch, 3.73 (opt 3.90) axle, 6.70 x 15" tires
- Opt **Overdrive**, 10" clutch, 3.90 (opt 3.73) axle, 6.70 x 15" tires
- Opt **Merc-O-Matic Dr**, 3.31 (opt 3.54) axle, 7.10 x 15" tires, or

Opt 182-hp @ 4400 rpm, 268 lb-ft torque @ 2600 rpm, 8.5:1 comp ratio, 140 psi, 4-bbl, dual-exh, w/

Merc-O-Matic Dr (reqd), 3.31 (opt 3.54) axle, 7.10 x 15" tires

Meteor Rideau Country Sedan



1955 Meteor Rideau Country Sedan

4 dr, 8 pass, station wagon

Stowaway back seat divided 2/3 left & 1/3 right. Divided bottoms fold up, forward, & down as level-floor loadspace, & divided backs fold forward & down as level-floor loadspace. As well, with the back folded forward, the whole Stowaway back 1/3 right seat tilts up & forward for rear seat access. **Rear Seat:** (2-pass) w/ back & bottom cushions removed the back folds forward & down as level-floor loadspace, total length 82.9."

Bodyside full-length bright-metal **meteor-bolt** molding w/ mid **flash** contrasting paint colour

Single-Tone, Two-Tone, or Tri-Tone, *plus* flash colour ext paint

Production Total **398**

Model 259C

\$3,098 [est] CAD FOB Oakville (std eng & trans) Shipping weight ____ lb

Meteor V-8 - 272-cid 90°, 2-ohv, 3.625" bore x 3.30" stroke, 5 main bearings, 6-volt, 3-blade fan

Std 175-hp @ 4400 rpm, 264 lb-ft torque @ 2600 rpm, 7.6:1 comp ratio, ____ psi, 4-bbl, dual-exh, w/

- **Standard**, 10" clutch, 4.09 (opt 4.27) axle, 7.10 x 15" tires
- Opt **Overdrive**, 10" clutch, 4.27 (opt none) axle, 7.10 x 15" tires
- Opt **Merc-O-Matic Dr**, 3.54 (opt none) axle, 7.10 x 15" tires, or

Opt 182-hp @ 4400 rpm, 268 lb-ft torque @ 2600 rpm, 8.5:1 comp ratio, 140 psi, 4-bbl, dual-exh, w/

Merc-O-Matic Dr (reqd), 3.54 (opt none) axle, 7.10 x 15" tires

**Also see these (printable) PDFs at website 1955-ford.com
(or search & find with Google)**

- [1955-ford-mainline-and-customline-models-and-specs.pdf](#) (9 pages)
- [1955-ford-mainline-and-customline-color-schemes.pdf](#) (6 pages)
- [1955-ford-fairlane-and-crown-vic-models-and-specs.pdf](#) (7 pages)
- [1955-ford-fairlane-and-crown-vic-color-schemes.pdf](#) (8 pages)
- [1955-ford-station-wagon-and-courier-models-and-specs.pdf](#) (8 pages)
- [1955-ford-station-wagon-and-courier-color-schemes.pdf](#) (8 pages)
- [1955-ford-all-colors-list.pdf](#) (5 pages)
- [1955-meteor-models-and-specs.pdf](#) (incl'd engs & trans) (7 pages)
- [1955-meteor-niagara-models-and-specs.pdf](#) (6 pages)
- [1955-meteor-rideau-models-and-specs.pdf](#) (8 pages)
- [1955-meteor-ext-paint-colours-all.pdf](#) (5 pages)